

# Missouri: Disability Employment Statistics

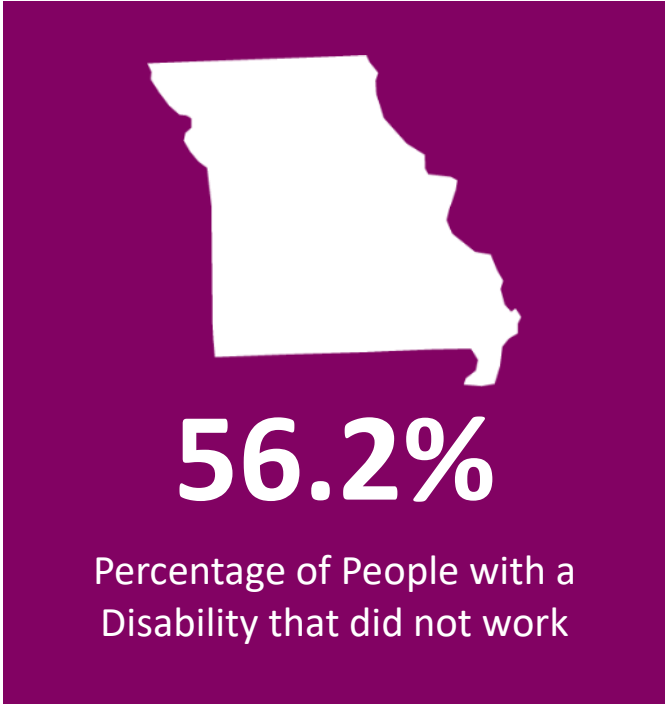
## Missouri By the Numbers:

Population and Employment Statistics<sup>1</sup>

Working Age Population with a Disability (18-64): **459,663**

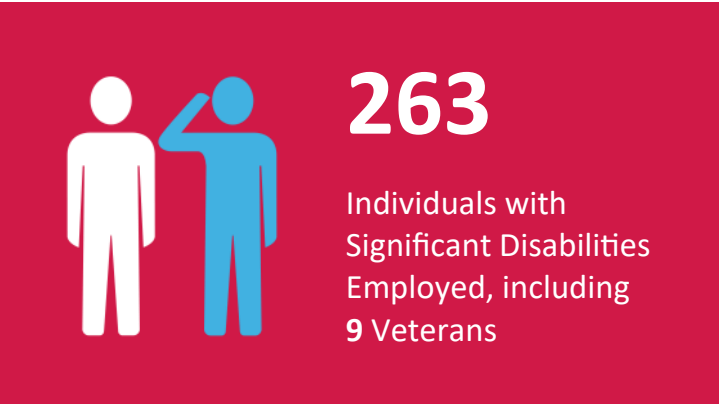
Percentage that did not work by Disability Type

Cognitive	63.4%
Hearing	41.2%
Ambulatory	70.4%
Visual	52.5%



## SourceAmerica/AbilityOne Network By the Numbers<sup>2</sup>

8 nonprofit agencies headquartered in Missouri participated in the program as SourceAmerica®/AbilityOne® authorized providers.

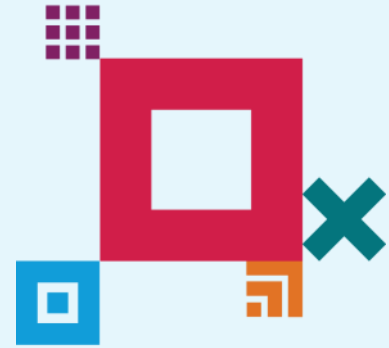


<sup>1</sup> Data from 2019 American Community Survey - <https://data.census.gov/cedsci/>

<sup>2</sup> Fiscal Year 2022

## About SourceAmerica

SourceAmerica connects government customers and other organizations to a national network of AbilityOne® authorized providers that hire a talented segment of the workforce—people with disabilities. Established in 1974, SourceAmerica is committed to increasing economic and social inclusion and advocating for a more accessible future of work for people with disabilities. SourceAmerica, an [AbilityOne®](#) authorized enterprise, harnesses the momentum and boosts the capability of its network and customers as a leading job connector for the disability community. To learn more, visit [SourceAmerica.org](https://SourceAmerica.org) and follow @SourceAmerica on [Facebook](#), [Twitter](#), [Instagram](#), and [LinkedIn](#).



## SourceAmerica Nonprofit Agencies Headquartered in Missouri

- Casco Area Workshop, Inc.
- Crowder Industries, Inc.
- Harrison County Association
- JobOne
- MGI Services Corporation
- SWI Industrial Solutions, Inc.
- The Helping Hand of Goodwill Industries Extended Employment, Inc.
- Web-Co Custom Industries, Inc.

## Other Nonprofit Agencies with AbilityOne Contracts in Missouri

- Anthony Wayne Rehabilitation Center Inc.
- Challenge Unlimited, Inc.
- CW Resources, Inc.
- Portco, Inc.
- ServiceSource, Inc.