

Maryland: Disability Employment Statistics

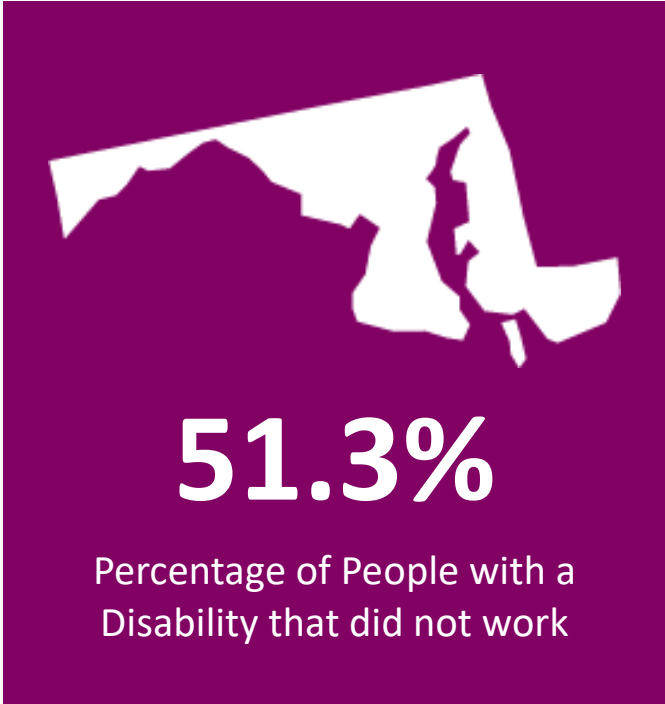
Maryland By the Numbers:

Population and Employment Statistics¹

Working Age Population with a Disability (18-64): **324,073**

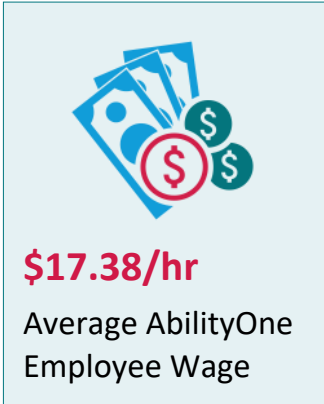
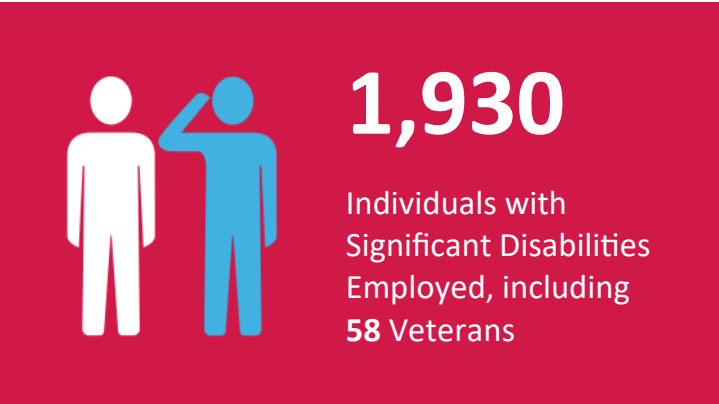
Percentage that did not work by Disability Type

Cognitive	59.7%
Hearing	35.4%
Ambulatory	63.8%
Visual	43.6%



SourceAmerica/AbilityOne Network By the Numbers²

10 nonprofit agencies headquartered in Maryland participated in the program as SourceAmerica®/AbilityOne® authorized providers.

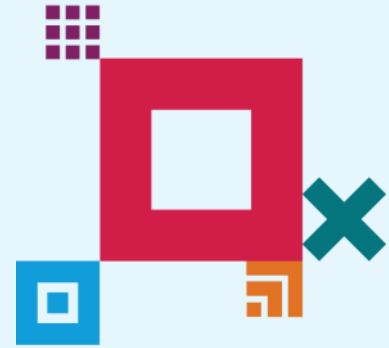


¹ Data from 2019 American Community Survey - <https://data.census.gov/cedsci/>

³ Fiscal Year 2022

About SourceAmerica

SourceAmerica connects government customers and other organizations to a national network of AbilityOne® authorized providers that hire a talented segment of the workforce—people with disabilities. Established in 1974, SourceAmerica is committed to increasing economic and social inclusion and advocating for a more accessible future of work for people with disabilities. SourceAmerica, an AbilityOne® authorized enterprise, harnesses the momentum and boosts the capability of its network and customers as a leading job connector for the disability community. To learn more, visit SourceAmerica.org and follow @SourceAmerica on [Facebook](#), [Twitter](#), [Instagram](#), and [LinkedIn](#).



SourceAmerica Nonprofit Agencies Headquartered in Maryland

- Alliance, Inc.
- Chesapeake Bay Industries, Inc.
- CHI Centers, Inc.
- Chimes District of Columbia
- Goodwill Industries of the Chesapeake, Inc.
- Hagerstown Goodwill Industries, Inc.
- Melwood Horticultural Training Center, Inc.
- Service Disabled Veterans Business Association
- Sinai Hospital of Baltimore
- The Arc Baltimore, Inc.

Other Nonprofit Agencies with AbilityOne Contracts in Maryland

- Columbia Lighthouse for the Blind
- CW Resources
- Davis Memorial Goodwill Industries
- DePaul Industries
- Didlake, Inc.
- Eco-Shred
- Global Connections to Employment
- Goodwill Industries of South Florida
- Louise w. Eggleston Center
- MVLE, Inc.
- National Telecommuting Institute
- NW Works
- Peckham Vocational Industries
- Portco, Inc
- Pride
- ServiceSource
- Servtech
- Skookum
- SOAR 365
- The ARC of the District of Columbia