

Louisiana: Disability Employment Statistics

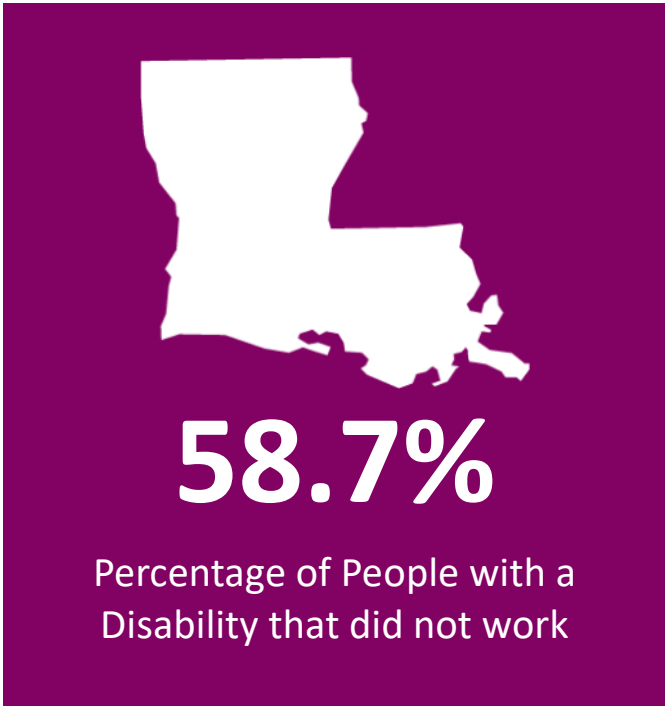
Louisiana By the Numbers:

Population and Employment Statistics¹

Working Age Population with a Disability (18-64): **375,922**

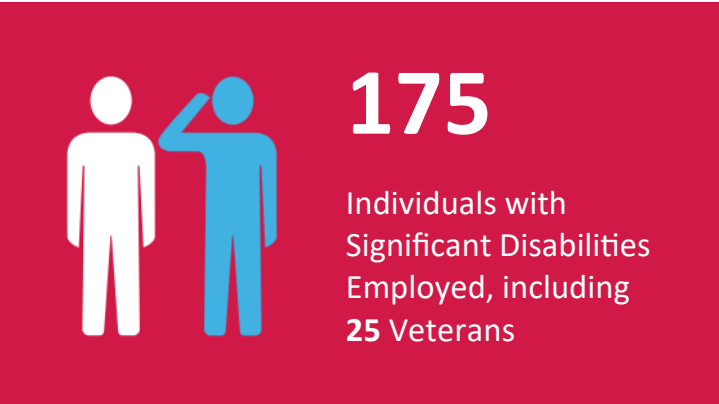
Percentage that did not work by Disability Type

Cognitive	66.1%
Hearing	48.2%
Ambulatory	71.6%
Visual	51.4%



SourceAmerica/AbilityOne Network By the Numbers²

5 nonprofit agencies headquartered in Louisiana participated in the program as SourceAmerica®/AbilityOne® authorized providers.

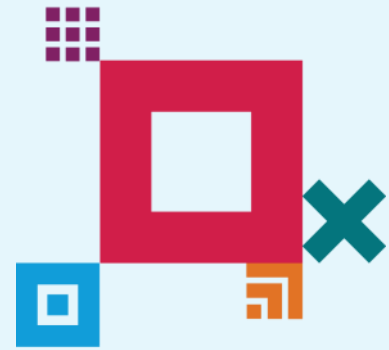


¹ Data from 2019 American Community Survey - <https://data.census.gov/cedsci/>

² Fiscal Year 2022

About SourceAmerica

SourceAmerica connects government customers and other organizations to a national network of AbilityOne® authorized providers that hire a talented segment of the workforce—people with disabilities. Established in 1974, SourceAmerica is committed to increasing economic and social inclusion and advocating for a more accessible future of work for people with disabilities. SourceAmerica, an [AbilityOne®](#) authorized enterprise, harnesses the momentum and boosts the capability of its network and customers as a leading job connector for the disability community. To learn more, visit SourceAmerica.org and follow @SourceAmerica on [Facebook](#), [Twitter](#), [Instagram](#), and [LinkedIn](#).



SourceAmerica Nonprofit Agencies Headquartered in Louisiana

- Goodwill Industries of North Louisiana, Inc.
- Goodworks, Inc.
- Louisiana Industries for the Disabled, Inc.
- The Arc of Caddo-Bossier
- The Arc of Greater New Orleans

Other Nonprofit Agencies with AbilityOne Contracts in Louisiana

- The Arc of Greater New Orleans
- Ace Data Storage
- Anthony Wayne Rehabilitation Center
- CW Resources
- Enterprises Professional Services
- Global Connections to Employment
- HHI Services
- Information Management Solutions
- On-Site Secure Shredding
- Pride Industries
- Rising Star Resource Development Corporation
- The Lighthouse for the Blind in New Orleans